

Optical Fibre Din Rail Box

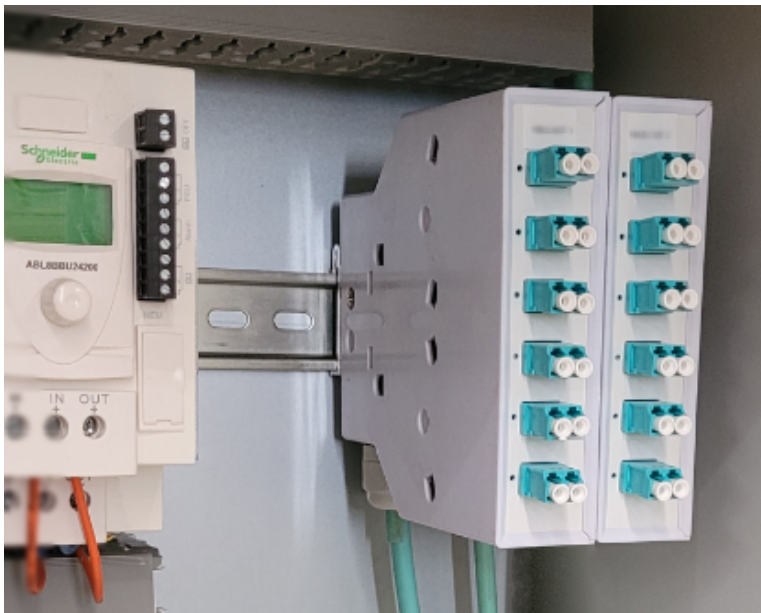
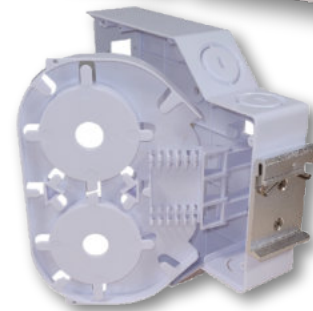


Description

The din rail box fits typical din rail installations in industrial cabinets allowing for secure termination of optical fibres for control or data applications. Multiple cable entry points for various applications

Features

- Suits din rail installations in industrial cabinets
- Splice tray fitted
- Plastic construction
- Steel patch panels suits 12 fibres
 - 2 patch panels provided - LC duplex / SC duplex
- Multiple cable entry points to suit various applications
 - cable entries are easy break out style
- Accessories include splice tray, splice protectors, glands



Specifications

Material	Body - Plastic Patchpanels - Steel - powder coated
Colour	White
Fibre Capacity	12f
Adaptor Styles	LC Duplex, SC Duplex
Dimensions	35mm (w) x 130mm (d) x 133mm (h)
Weight	0.25kg - Boxed

Part Numbers

DIN2	Din rail enclosure - patch panels to suit 6 x LC duplex adaptors / 6 x SC duplex adaptors
------	---