

Optical Fibre Din Rail / Wall Box

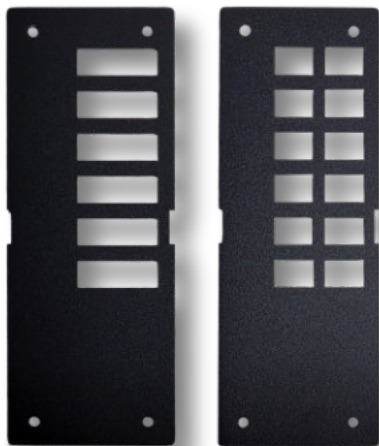


Description

The din rail box fits typical din rail installations in industrial cabinets allowing for secure termination of optical fibres for control or data applications. Multiple cable entry points suit various applications.

Features

- Suits din rail installations in industrial cabinets
- Splice tray fitted
- Mild steel powder coated construction
- Steel patch panels to suits 12/24 fibres LC or 6/12f SC
- 4 cable entry points to suit various applications
- Accessories include splice tray, splice protectors, 20mm gland

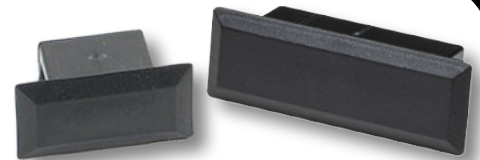


Additional Front Plates
included



Specifications

Material	Body - Steel - powder coated Patchpanels - Steel - powder coated
Colour	Black
Fibre Capacity	24f - LC connectors / 12f - SC Connectors
Adaptor Styles	LC Duplex / Quad, SC Simplex / Duplex
Dimensions	55mm (w) x 155mm (h) x 105mm (d)
Weight	0.55kg - Boxed



Blanking plugs also available

Part Numbers

DIN_1	Din rail enclosure
BLANKING PLUG LCD	Blanking plug to suit LC duplex cutouts - Optional
BLANKING PLUG SCD	Blanking plug to suit SC duplex cutouts - Optional